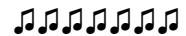


# Parkway Concert Orchestra



P.O. Box 1025, Dedham, MA 02027  
www.ParkwayConcertOrchestra.org

Matthew Fritz Music Director and Conductor

February 2012 Newsletter

Vol. 10, No. 7

## Concert on March 4

There will be a brush-up rehearsal at 1:15. I will leave my cell phone on during the afternoon of the concert. Please let me know if you have any questions.  
Susan Silverman

### Program Order

On the Steppes of Central Asia  
Meditation from *Thais*  
The Pleasure Dome of Kubla Khan  
Scheherazade, Mvt. III.  
Variations on a Korean Folk Song  
-- Intermission --  
Dona Nobis Pacem  
Holy Name Youth Choir  
Selections from *The King and I*  
Medley from Walt Disney's *Aladdin*  
"Amore e grillo" from *Madama Butterfly*  
"A Wandering Minstrel I" from *The Mikado*  
Ray Bauwens, Tenor  
Encore: "Nessun Dorma" from *Turandot*

### Other Concert Details

- place:** Holy Name Parish Upper Church  
1689 Centre Street, West Roxbury
- time:** There will be a brush-up rehearsal at 1:15. Plan to arrive by 1:00 so you are tuned & ready to play at 1:15. Concert starts at 3:00.
- parking:** Members should park in the school lot across the street and walk over to the church.
- dress:** **Men** tuxedo or black suit  
black shirt with black bow-tie  
black shoes and socks
- Women** black skirt (below the knee) or slacks  
black long-sleeved top  
black shoes, and socks or stockings  
optional black jacket

### Upcoming rehearsals and board meeting

**February 20** (Presidents Day): No rehearsal  
**February 27:** Dress rehearsal will be held at Holy Name. For the rehearsal, on-street parking around the church is fine, or in the school lot across the street.  
**March 5:** There will not be a rehearsal on March 5, the day after the concert. Instead, there will be an orchestra board meeting at the First Congregational Church from 7:30-9:30. All orchestra members are welcome to attend.

## Directions to Holy Name

**BOSTON AREA:** Follow the Jamaica way. Pass Jamaica Pond on the right; there is a rotary and a set of traffic lights. About a ¼ mile is another rotary - follow Centre Street, which is the first right (landmark: The Monastery of the Poor Clare Nuns will be on left).

Drive past Faulkner Hospital on right; at second traffic signal (just beyond the Hebrew Rehabilitation Center on the left), bear left continuing on Centre Street. After passing through two traffic signals Holy Name Church will be on the right; the Holy Name Parish School and Parish Hall and Msgr. Charles Finn Hall are to the right of the rotary.

**MASSACHUSETTS TURNPIKE:** Exit 14 and follow the directions for Route 95/Route 128 Southbound.

**ROUTE 95/ROUTE 128 SOUTHBOUND:** Take Route 9 East (exit 20A). Drive about 3.7 miles to Hammond Street (landmark - Exxon Station), turn right. Continue 0.9 miles to rotary. Go ¾ way around rotary onto Newton Street (toward Putterham Meadows golf course.) Continue straight ahead, then bear right up hill. Continue through the traffic lights and ½ way around each of the next two rotaries, onto the West Roxbury Parkway. Continue on West Roxbury Parkway through set of traffic lights to a third rotary. Holy Name Parish Hall is on the right; Holy Name Church is on the left.

**ROUTE 95/ROUTE 128 NORTHBOUND:** Exit 15A North toward Dedham. Drive approximately 1.3 miles northbound. Bear right onto Washington Street toward Roslindale-Forest Hills. Drive 2.4 miles (approximately 7 sets of traffic signals). As you pass St. John Chrysostom Church on your right, you should be in the far left lane. As you approach the traffic signal, this will be the intersection of West Roxbury Parkway/Enneking Parkway. Note: A small street sign will identify West Roxbury Parkway and a large street sign will identify Enneking Parkway. Landmark would be CVS ahead on the right. Take the dedicated left-hand turn onto West Roxbury Parkway. Follow West Roxbury Parkway for 1 mile through two sets of traffic lights and continue to rotary. Holy Name Church is on the right and Holy Name Parish School is on the left.

### If you can't make a rehearsal

If you know you're going to miss a rehearsal, please contact Judy. If at all possible, 24 hours' notice is expected, as a courtesy. It is especially important for winds and brass to let us know as far ahead of time as possible so that a substitute may be found for that rehearsal. And please remember to return your folder - Someone else may need the music in it.